



**CONSEAL™**  
Concrete Sealants INC.

**ConBlock SH**

Capillary Reactive Penetrating Sealer

## PRODUCT DESCRIPTION

ConBlock SH is a non-toxic, water-based penetrating concrete sealer made from a proprietary blend of inorganic materials that react with Portland Cement Concrete to create crystalline formations within the concrete pore structure. ConBlock SH is used for improving the durability, chemical resistance, and hardness, as well as reducing the porosity of concrete. By reducing or eliminating the “dusting” on concrete, ConBlock SH is beneficial in preparing the surface for the application of coatings and adhesives.

## PRODUCT APPLICATIONS

- Interior or Exterior Concrete
- Precast Concrete Water Containment Structures
- Parking Decks / Garages
- Above Grade Concrete Products
- Use as a primer for coatings and adhesives

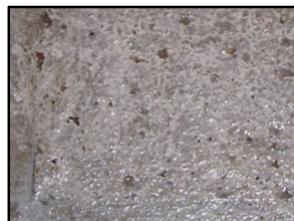
## FEATURES AND BENEFITS

- Reduces dusting
- Reduces Porosity / Absorbency
- Improves Freeze / Thaw Scaling
- Improved Resistance to Deterioration From Chemical Attack Including Acid Rain, Vinegar, and Deicing Salts
- Reduces Efflorescence

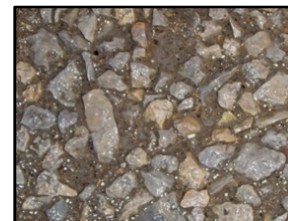
## PHYSICAL PROPERTIES

- Color: Clear to slightly hazy liquid
- Odor: None to slightly soapy
- Density: 9.15 lbs/gal
- pH: 11.5 to 12
- VOC: 0 g/l
- Coverage: 125-200 SF/gallon

## PRODUCT TESTING



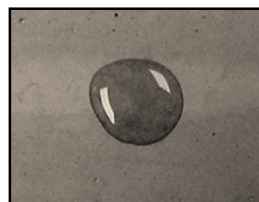
TREATED



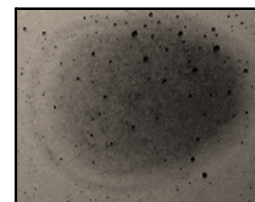
UNTREATED

**ASTM C-672 Standard Test Method for Scaling Resistance of Concrete Surfaces Exposed to Deicing Chemicals**

After 50 cycles, the ConBlock SH treated block showed very little scaling as compared to the control which showed severe scaling.



TREATED (after 2 hours)



UNTREATED (after 2 hours)

**ASTM C642 Standard Test Method for Density, Absorption, and Voids in Hardened Concrete**

	Requirement	ConBlock SH
48 HOURS	<1%	0.98%
50 DAYS	<2%	1.61%

**ODOT SS 841 Proof of Crack Sealing Test (Modified AASHTO T259)**

The test requires a minimum result of 2 for treated specimens over untreated specimens. ConBlock SH passed with a rating of 8.8 with an average crack width of 0.002” (0.05mm).



**CONSEAL™**  
Concrete Sealants INC.

**ConBlock SH**

Capillary Reactive Penetrating Sealer

## INSTALLATION INSTRUCTIONS

### *Preparatory Work:*

Preparatory work is generally not required. However, if the concrete surface is coated with heavy wax, thick grease, recently applied surface sealer, rubber or acrylic paint or other impervious material, remove such materials so that the ConBlock SH can reach the surface of the concrete where it will be allowed to penetrate into the concrete. Accidental over application will not discolor the surface.

### *Method of Application:*

Dampen surface to be treated using a fine mist water spray. The surface should be dry with the concrete saturated. Saturate the surface thoroughly with ConBlock SH at an approximate rate of 125-200 square feet per gallon, depending upon porosity of the concrete. Low pressure spray equipment, such as a hand pumped garden type sprayer works well for medium sized areas. For large areas, airless spray equipment is very efficient. Brushes or rollers are not recommended because of the low viscosity of the ConBlock SH.

### *Installation Precautions:*

Do not allow the ConBlock SH to pond or puddle, as a white residue will likely form on the surface of the concrete. On horizontal surfaces, move the excess material from the low spots to the high spots

with a squeegee, mop or broom. The time for additional applications can be judged by observing the time it takes for the ConBlock SH to soak into the concrete. If the ConBlock SH soaks in quickly, generally less than fifteen minutes after application, additional material should be applied.

The concrete surface “dusting” will be reduced or eliminated immediately after ConBlock SH is applied. The chemical reactions that convert calcium hydroxide ( $\text{Ca}(\text{OH})^2$ ) into calcium silicate hydrate (C-S-H) will typically occur within 7-14 days after application. Consult with the supplier of flooring, coatings, or adhesives for specific instructions for determining the amount of cure time required before the installation of these products over a ConBlock SH treated surface.

ConBlock SH may etch glass and aluminum. Clean any affected surfaces immediately with a damp cloth or sponge. Leather gloves and shoes may become slightly stiff as a result of contact with ConBlock SH. Follow the safe handling and application procedures described on the MSDS and product label.

ConBlock SH should be applied at a minimum concrete surface temperature of 40°F. If the product freezes, let the product thaw completely and then stir the material.

### LIMITED WARRANTY

This information is presented in good faith, but we cannot anticipate all conditions under which this information and our products, or the products of other manufacturers in combination with our products, may be used. We accept no responsibility for results obtained by the application of this information or the safety and suitability of our products, either alone or in combination with other products. Users are advised to make their own tests to determine the safety and suitability of each such product or product combinations for their own purposes. It is the user's responsibility to satisfy himself as to the suitability and completeness of such information for this own particular use. We sell this product without warranty, and buyers and users assume all responsibility and liability for loss or damage arising from the handling and use of this product, whether used alone or in combination with other products.